



KN-2200 SERIES
COLPOSCOPE DIGITAL
IMAGING SYSTEM

✦ Obvious to see, observe subtlety
care for women's health

COLPOSCOPE





KN-2200

COLPOSCOPE DIGITAL IMAGING SYSTEM

- ① **Camera**
1/4 inch Sony CCD, 0.8 million effective pixels, 18 times Optical zoom, Horizontal resolution 700 LINE. Adopt 24 groups of energy-saving and eco-friendly white LED light source, with high brightness, long life, uniform illumination, High Color rendering index, do not produce heat etc. Hand-held zoom button, convenient for doctors to observe pathological changes at the same time.
- ② **Control handle**
Adopt Palm-type handle design, humanized operation panel, Silicone button Oval layout, can realize zoom, focus, imaging mode, acetic acid timing, image marking, brightness adjustment and other functions with single hand.
- ③ **Bracket**
Full-damping Bracket, 360° adjustment, can automatically hover at any Angle.
- ④ **Vertical stand**
New vertical stand, flexible and simple operation, and lightweight can adjust the height of the lens up and down. Three-segment design of the stand, easy to disassemble, convenient for doctors to Carry.
- ⑤ **Computer** ⑥ **Display** ⑦ **Printer** ⑧ **Assembled trolley**

Colposcope Digital imaging System is the combination of digital imaging technology and colposcope, which is suitable for clinical gynecological examination of vulva, vagina, cervix and other parts. It can enlarge the observed image to a certain multiple, and find small lesions that cannot be detected by the naked eye. With this amplification effect, doctors can clearly see the skin of the cervix and the genital epidermis through the large-screen display of the very small details of the lesions, help to improve the accuracy of the diagnosis of cervical, genital and other pathological changes, for the early detection of diseases to provide evidence, so that the cure rate of disease greatly improved. And through the computer can be observed image collection, processing, Clinical diagnosis, report editing, query statistics, A greater degree of role in the use of colposcope, better to meet the future medical imaging "digital" development Requirements.

Scope of application: clinical diagnosis of vulva, vagina, cervix and other parts

NO.1 OPTIONAL





KN-2200A

COLPOSCOPE DIGITAL IMAGING SYSTEM

① Camera

Adopt 1/2.8 inch Sony CCD, 20 times Optical zoom, 2.1 million effective pixels, provides the doctor high-quality, high-resolution Images. Advanced spot subtraction imaging technology to reduce the light spot caused by the phenomenon of reflection. Hand-held zoom button, convenient for doctors to observe pathological changes at the same time.

② Control handle

Adopt Palm-type handle design, humanized operation panel, Silicone button Oval layout, can realize zoom, focus, imaging mode, acetic acid timing, image marking, brightness adjustment and other functions with single hand.

③ Bracket

Full-damping Bracket, 360° adjustment, can automatically hover at any Angle.

④ Swing Arm stand

Flexible positioning of the swing arm bracket. The position and angle of the lens can be adjusted arbitrarily, to meet the needs of clinical examination and operation, to provide doctors with no dead angle of observation vision.

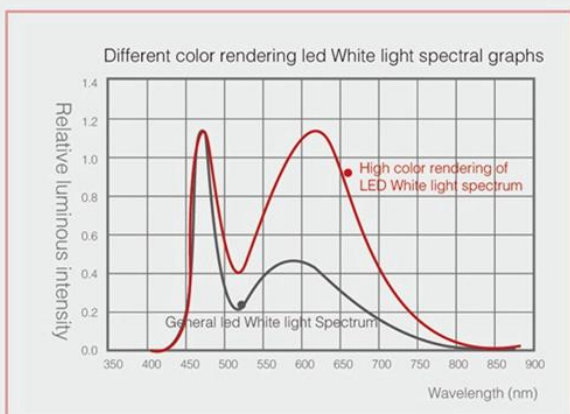
⑤ ABS integrated Trolley

The overall streamlined design of the trolley, flexible operation, reasonable layout, small footprint, ergonomic. Monitor can be adjusted up and down, more flexible viewing angles.

⑥ Computer ⑦ HD display ⑧ Printer

NO.2

LED WHITE LIGHT SPECTRUM GRAPHS



Use high color rendering, high brightness LED light source, Significantly improves the contrast and level of detail of the surface imaging of the cervical tissue



Low Color Rendering Index



High Color Rendering Index

Color rendering index ≥ 95 , highlighted refers to the LED with unique imaging technology
More realistic reduction of tissue color and level of detail



KN-2200I

COLPOSCOPE DIGITAL IMAGING SYSTEM

① Camera

Adopt 1/2.8 inch Sony CCD, 20 times Optical zoom, 2.1 million effective pixels, provides the doctor high-quality, high-resolution Images. Advanced spot subtraction imaging technology to reduce the light spot caused by the phenomenon of reflection. Hand-held zoom button, convenient for doctors to observe pathological changes at the same time.

② Control handle

Adopt Palm-type handle design, humanized operation panel, Silicone button Oval layout, can realize zoom, focus, imaging mode, acetic acid timing, image marking, brightness adjustment and other functions with single hand.

③ Bracket

Full-damping Bracket, 360° adjustment, can automatically hover at any Angle.

④ Trolley

All-metal material, integrated design, more convenient to move, suitable for all types of inspection room. Flexible positioning of the swing arm bracket. The position and angle of the lens can be adjusted arbitrarily, to meet the needs of clinical examination and operation, to provide doctors with no dead angle of observation vision.

⑤ Barcode scanner ⑥ Computer ⑦ HD display ⑧ Printer

NO.3

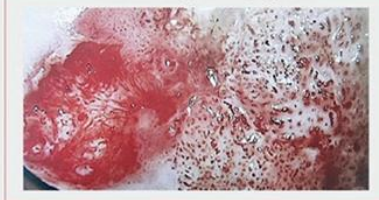
IMAGING MODE

Colorless imaging



Highlighting important lesion tissues and vessels for rapid retrieval of pathological tissue

Natural light imaging



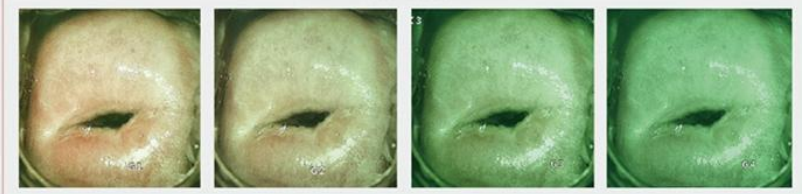
Low color temperature imaging technology, softer light for better observation of epithelial tissue

LED light imaging



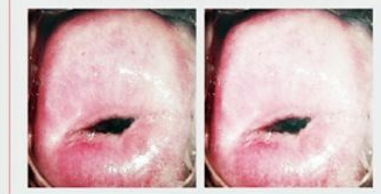
High Color Rendering Index combined with unique imaging technology, more realistic restore organization primaries and detail of levels

Filter mode



Four-stage green light mode for enhanced micro-vascular recognition, highlighting vascular details

Contrast light spot reduction effect



In the observation of body fluid more tissue, can reduce the light spot caused by the reflective phenomenon

OIS HD DOUBLE SCREEN



Enhancement type

KN-2200I

COLPOSCOPE DIGITAL IMAGING SYSTEM

① Camera

Using Sony's latest HD technology, 3.27 million effective pixels, 30 times Optical zoom, with high-quality amplification effect can be clearly observed a variety of small pathological cells, can be accurately positioning the biopsy of the lesion site, help improve the diagnosis of various cervical diseases, pre-cancerous screening accuracy, reduce missed Diagnosis. Advanced spot subtraction imaging technology and optical image stabilization technology, reduce the light spot caused by the phenomenon of reflection and blurred images by lens' shaking and offsetting.

② Control handle

Adopt Palm-type handle design, humanized operation panel, Silicone button Oval layout, can realize zoom, focus, imaging mode, acetic acid timing, image marking, brightness adjustment and other functions with single hand.

③ Bracket

Full-damping Bracket, 360° adjustment, can automatically hover at any Angle.

④ Trolley

Metal and integrated Three-arm design for all types of inspection beds. Flexible positioning of the arm support, can arbitrarily adjust the position and angle of the lens, to meet the needs of clinical examination and operation, to provide doctors with no dead angle of observation vision.

⑤ Patient Screen

Dual screen design, Patients can intuitively understand the disease situation, convenient for doctors to communicate with Patients.

⑥ Barcode scanner ⑦ Computer ⑧ HD display ⑨ Printer

NO.4

SOFTWARE CHARACTERISTICS



IMAGE ACQUISITION

Foot switch and software two kinds of acquisition, video recording mode, The image can be dynamic, static, full-screen capture, Each check can collect 100 color images



IMAGE PROCESSING

With the image dynamic, static comparison of function, could be compared with the standard graph, the captured image can be enlarged, reduced, negative image, marking, text labeling, local amplification, area circumference calculation and other operations. More convenient for doctors to identify pathological changes



REPORT EDITING

Comes with 19 standard patient case report templates for easy editing and printing of case Reports. Could display 1-6 pictures on the same screen, report template can be designed and modified, and can output PDF file, to provide the basis for prevention of medical disputes



CLINICAL ANALYSIS

Professional patient case graphs (up to 175 types), and could add patient case picture to the standard graph repository for easy Clinical Comparison. Professional Clinical Diagnostic Knowledge Base provides a large number of editable clinical terms in conjunction with Rci's automated evaluation system to make the inspection more objective and accurate



QUERY STATISTICS

Cases can be queried in five ways, such as Case number, name, barcode, date of birth and date of Examination. The retrieved cases could be image display, data modification, preservation, Follow-up and video replay to facilitate hospital information management and improve management Efficiency.

KN-2200BII

COLPOSCOPE DIGITAL IMAGING SYSTEM



① Optical System

Ultra-long depth of field, large field of view, super-stereoscopic, realistic color reduction, unique light path design, for pre-cancerous, pathological changes before the point of blood vessels, columnar epithelial and some small lesions to provide true 3D visual Effects.

② Binocular eyepiece

High-eye point, Wide-field eyepiece, 45° and 0° eyepiece options, suitable for different heights of inspection beds, making clinical operation more Comfortable.

③ Five- step Zoom

Up to 30 times of optical amplification, with high-quality amplification effect can be clearly observed a variety of small pathological cells, can be used to accurately locate biopsy of live lesions, help to improve the diagnosis of various cervical diseases, pre-cancerous screening accuracy, reduce missed Diagnosis.

④ Camera Device

Adopt German-imported Basler camera, the pixel can reach 6.37 million, providing physicians with high-quality images with higher Resolution.

⑤ Light Source

Adopt energy-saving and environmental protection LED light source, with high brightness, long life, uniform illumination, High Color rendering index, none producing heat and so on.

⑥ Trolley

Integrated photoelectric and trolley design, flexible operation, reasonable layout, small footprint, in a limited space can also meet clinical applications. All joints are using damping bearing technology, with the use of lifting spiral arm, to achieve arbitrary space hover, so that the optical system positioning more accurate and stable.

⑦ HD Dell all-in-one PC ⑧ Printer

NO.6 OPTIONAL



45° Eyepiece



0° Eyepiece

Two options for 45° and 0° Eyepieces for different heights of inspection beds



20 Eyepiece



250 Objective

Maximum Up to 30 times optical Amplification

Combination	Five Gears	0.4	0.6	1.0	1.6	2.5
12.5 × Eyepiece 300mm Objective	Magnification	2.8 ×	4 ×	7 ×	11.5 ×	17 ×
	Field of view	78mm	50	32	19	13
12.5 × Eyepiece 250mm Objective	Magnification	3 ×	5 ×	8 ×	13 ×	20 ×
	Field of view	65mm	42mm	26mm	16mm	10mm
20 × Eyepiece 300mm Objective	Magnification	4 ×	7 ×	11 ×	17 ×	27 ×
	Field of view	58mm	37mm	23mm	14mm	9mm
20 × Eyepiece 250mm Objective	Magnification	5 ×	8 ×	13 ×	21 ×	32 ×
	Field of view	37mm	24mm	15mm	9mm	6mm

NO.7

SOFTWARE FEATURES

Eyepiece	12.5x, Optical: 20x	CCD Objective focal length	65mm	
Observation Angel	45° Eyepiece: 0 ~ 135°	CCD interface Type	USB3.0	
	0° Eyepiece: -45 ~ 90°	Cantilever Adjustment Range	270°	
Double Eyepiece Focal length	45° Eyepiece: 125mm	Illuminance	30000Lux	
	0° Eyepiece: 160mm	Color temperature	5600K	
Diopter adjustment	-5D ~ +5D	Life time	≥60000 Hours	
Eyepiece Adjustment Range	55 ~ 75mm	Illumination Range	Φ ≥80mm	
Objective Focal length	300mm, Optical: 250mm		KN-2200B/I	KN-2200B/II
Working distance	300 Objective: 300mm	Camera	1/3" sony CMOS	1/1.8" Basler ccd (Germany)
	250 Objective: 250mm	Effective Pixel	2 million 100 thousand pixels	6 million 370 thousand pixels
Focusing	Fine tune, By hand	Image Size	1920 × 1080	3088 × 2064
Focusing distance	40mm	Horizontal resolution	1080p/60	≥2000 Lines

CHINA·JIANGSU

KERNEL 科诺
 ADVANCING OF TECHNOLOGY PROMISE OF LIFE

 ADD : KEREN Building, Economic Development District,
 Xuzhou City, Jiangsu Province, China

TEL: 0086-516-87732209 87732210

FAX: 0086-516-87732210 E-mail : kernel@kernelmed.com

For more details, please login www.kernelmed.com

Other Products



UV Phototherapy

www.kerneluvb.com



Photodynamic Therapy (Red Light Therapy)

www.kernelpdt.com

